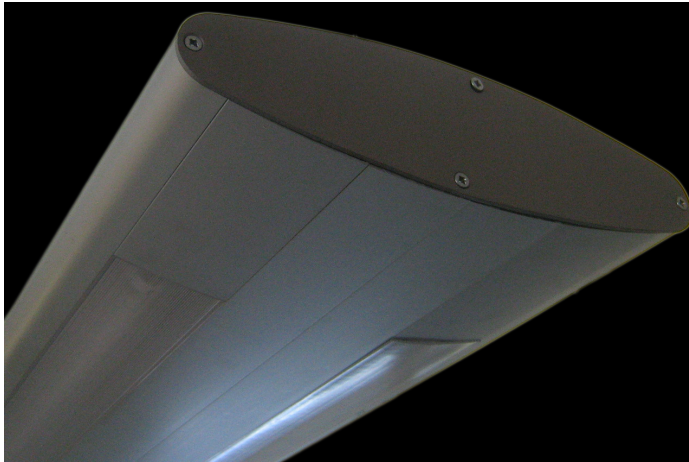


# The Lighting Workshop Ltd

**System: QS75 Bullnose Double**  
300mm (W) x 75mm (H)



<b>Distribution</b>	Direct Direct/Indirect
<b>Lighting Options</b>	Single Tube T5, T5 Batten, LED Strip, LED Modules, Emergency Back Up
<b>Diffusers</b>	Clear Reeded, Opal
<b>Corners</b>	Custom "L" joins
<b>Mounting Options</b>	Suspended
<b>Colours</b>	Natural Silver Anodised Powder Coat Colours at Client Match
<b>Lengths</b>	6m Maximum Single Length Straight Joiners to Extend over 6m
<b>IP Rated</b>	<b>IP54 available upon Request</b>

*All Systems Manufactured in New Zealand*

**Phone** +64 9 827 8980  
**Fax** +64 9 827 8981  
**Address** Cnr Bentinck and Drury Streets, New Lynn  
**PO Box** 15 543, Auckland 0640, New Zealand

[www.tlw.co.nz](http://www.tlw.co.nz)